
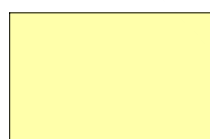
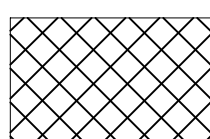
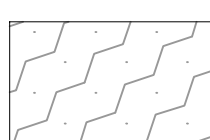
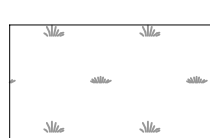
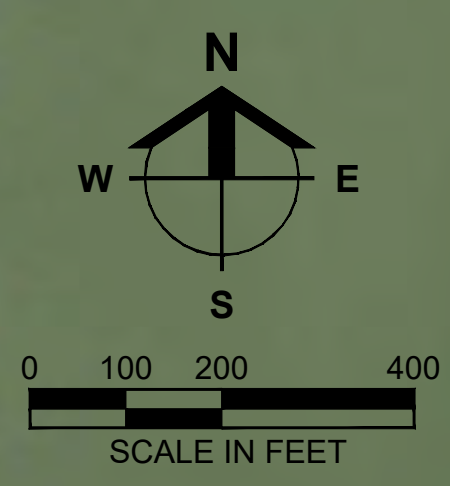




**LEGEND**

	CDD OWNERSHIP
	MASTER HOA OWNERSHIP
	CDD EASEMENT
	EXISTING LAKE
	PRESERVE AREA



**Barraco**  
and Associates, Inc.  
CIVIL ENGINEERING - LAND SURVEYING  
LAND PLANNING  
[www.barraco.net](http://www.barraco.net)  
2271 MCGREGOR BLVD., SUITE 100  
POST OFFICE DRAWER 2800  
FORT MYERS, FLORIDA 33902-2800  
PHONE (239) 461-3170  
FAX (239) 461-3169

FLORIDA CERTIFICATES OF AUTHORIZATION  
ENGINEERING 7995 - SURVEYING LB-6940

PREPARED FOR

**BLUE LAKE  
COMMUNITY  
DEVELOPMENT  
DISTRICT**

PROJECT DESCRIPTION

**BLUE  
LAKE  
CDD**

LEE COUNTY, FLORIDA

THIS PLAN IS PRELIMINARY AND  
INTENDED FOR CONCEPTUAL  
PLANNING PURPOSES ONLY.

SITE LAYOUT AND LAND USE  
INTENSITIES OR DENSITIES MAY  
CHANGE SIGNIFICANTLY BASED  
UPON SURVEY, ENGINEERING,  
ENVIRONMENTAL AND / OR  
REGULATORY CONSTRAINTS  
AND / OR OPPORTUNITIES.

DRAWING NOT VALID WITHOUT SEAL, SIGNATURE AND DATE  
© COPYRIGHT 2021, BARRACO AND ASSOCIATES, INC.  
REPRODUCTION, CHANGES OR ASSIGNMENTS ARE PROHIBITED

FILE NAME: 23685\_BLCDD\_OWNERSHIP\_20200106 (A) (R) (L)

LOCATION: JJ23685/CDD/

PLOT DATE: THU, 10-21-2021 - 9:42 AM

PLOT BY: PEYTON GAUSE

CROSS REFERENCED DRAWINGS

PLAN REVISIONS


PLAN STATUS

CDD EXHIBIT

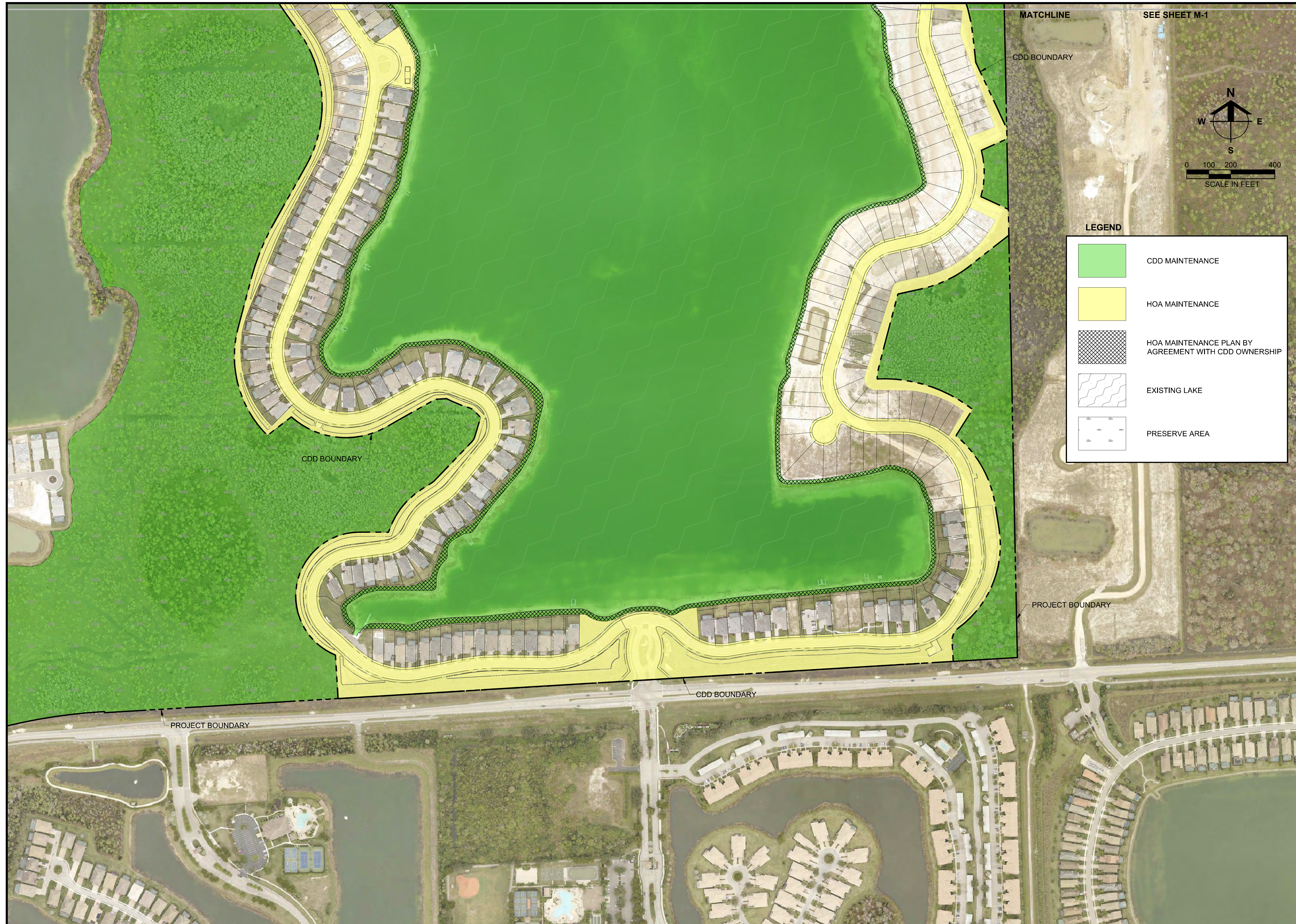
**BLUE LAKE CDD  
OWNERSHIP AND  
EASEMENT MAP**

PROJECT / FILE NO. SHEET NUMBER

**23685 O-1**







**LEGEND**

- CDD MAINTENANCE
- HOA MAINTENANCE
- HOA MAINTENANCE PLAN BY AGREEMENT WITH CDD OWNERSHIP
- EXISTING LAKE
- PRESERVE AREA

**Barraco**  
and Associates, Inc.  
CIVIL ENGINEERING - LAND SURVEYING  
LAND PLANNING  
[www.barraco.net](http://www.barraco.net)  
2271 MCGREGOR BLVD., SUITE 100  
POST OFFICE DRAWER 2800  
FORT MYERS, FLORIDA 33902-2800  
PHONE (239) 461-3170  
FAX (239) 461-3169  
FLORIDA CERTIFICATES OF AUTHORIZATION  
ENGINEERING 7995 - SURVEYING LB-6940

PREPARED FOR  
**BLUE LAKE  
COMMUNITY  
DEVELOPMENT  
DISTRICT**

PROJECT DESCRIPTION  
**BLUE  
LAKE  
CDD**  
LEE COUNTY, FLORIDA

THIS PLAN IS PRELIMINARY AND INTENDED FOR CONCEPTUAL PLANNING PURPOSES ONLY.  
SITE LAYOUT AND LAND USE INTENSITIES OR DENSITIES MAY CHANGE SIGNIFICANTLY BASED UPON SURVEY, ENGINEERING, ENVIRONMENTAL AND / OR REGULATORY CONSTRAINTS AND / OR OPPORTUNITIES.

DRAWING NOT VALID WITHOUT SEAL, SIGNATURE AND DATE  
© COPYRIGHT 2021, BARRACO AND ASSOCIATES, INC.  
REPRODUCTION, CHANGES OR ASSIGNMENTS ARE PROHIBITED

FILE NAME: 23685\_BLCDD\_MAINTENANCE (AERIAL).DWG  
LOCATION: JJ23685/CDD/  
PLOT DATE: THU, 10-21-2021 - 9:38 AM  
PLOT BY: PEYTON GAUSE

CROSS REFERENCED DRAWINGS

PLAN REVISIONS	

PLAN STATUS  
CDD EXHIBIT

**PROPOSED CDD  
OWNERSHIP AND  
MAINTENANCE MAP**

PROJECT / FILE NO. <b>23685</b>	SHEET NUMBER <b>M-2</b>
------------------------------------	----------------------------